

SEAFLO[®]

Halogen Searchlight

Remote Control **03 Series**

Instructions



SEAFLO[®]

DESCRIPTION

SEAFLO searchlights can perform omnidirectional, multi-angle, and long-distance lighting tasks. They can rotate 360 degrees horizontally and 60 degrees vertically. Equipped with a remote control for user convenience, these searchlights are ideal for mariners locating buoys, moorings, channel markers, and more.

FEATURES

- Constructed of non-corrosive materials
- Sealed beam halogen lamp
- Remote control and 15 ft (4.6 m) cable included
- IP65 waterproof rating
- 420 meters beam distance
- Easy installation

SPECIFICATIONS

- 360° horizontal movement
- 60° vertical sweep
- 50 watt bulb x 2
- Thermoplastic housing and base

Model	Housing Color	Voltage	Amps	Power	Candlepower
SFSL1-100-03W	White	12V	7.2A	100W	200000cd
SFSL2-100-03W		24V	4A		
SFSL1-100-03B	Black	12V	7.2A		
SFSL2-100-03B		24V	4A		

INSTALLATION INSTRUCTIONS

Light mounting

Select a location for the light that allows for clear beam projection both forward and as far aft as possible. The searchlight base should be mounted on a level, flat surface.

1. Using the light base mounting template enclosed, drill four (4) mounting holes and a center hole at the center of the base for the wiring cable.
2. Feed the cable through the hole and secure the light in place with the four (4) #M6x5 screws provided, or other applicable screws for your specific application. Mount the light so that the FRONT arrow on the bottom is facing forward.

NOTE: Secure the cable with nylon clips or equivalent. Protect the installation at points of stress and leave adequate slack where the cable needs to be flexible.

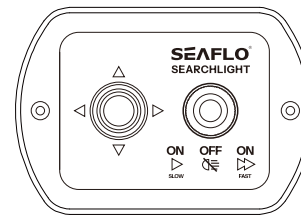
⚠ WARNING	Do not touch lens when light is on.
Burn Hazard	Do not operate with storage cover over light.

Control installation

Select a location near the helm that allows for convenient operation of the control.

1. Cut one hole for mounting the control.
2. Route power leads (supplied by customer) from the voltage source to the control. Note: Wiring must be 16 gauge (minimum).
3. Connect the positive (+) power lead to the red (+) wire and the negative (-) power lead to the black wire.
4. Connect the wires from the control panel to the end of the searchlight cable using the butt connectors provided.
5. Use bedding compound or sealant to waterproof the control mounting.
6. Secure the control with the self-tapping screws provided.

CONTROL UNIT OPERATION

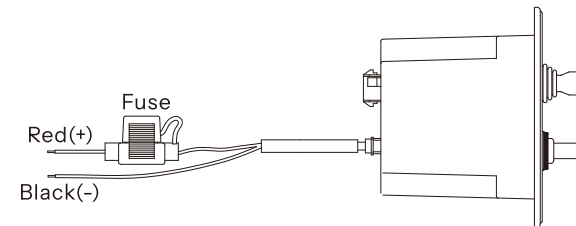


Switch function

- (A) Directional Switch - The lever has four contact positions and operates in both horizontal and vertical directions.
 (B) Light Switch - SLOW / OFF / FAST switch positions.

Circuit protection

A 5-amp automotive blade-type fuse is located in the input line of the remote control device. To replace the fuse, open the fuse holder, remove the old fuse, and insert a new one. If this fuse blows, replace it with the same size fuse after determining the cause of the blown fuse.



When installation and wiring are complete, check the light operation. If the light is inoperative or does not operate correctly, refer to the troubleshooting instructions.

Optional secondary control mounting

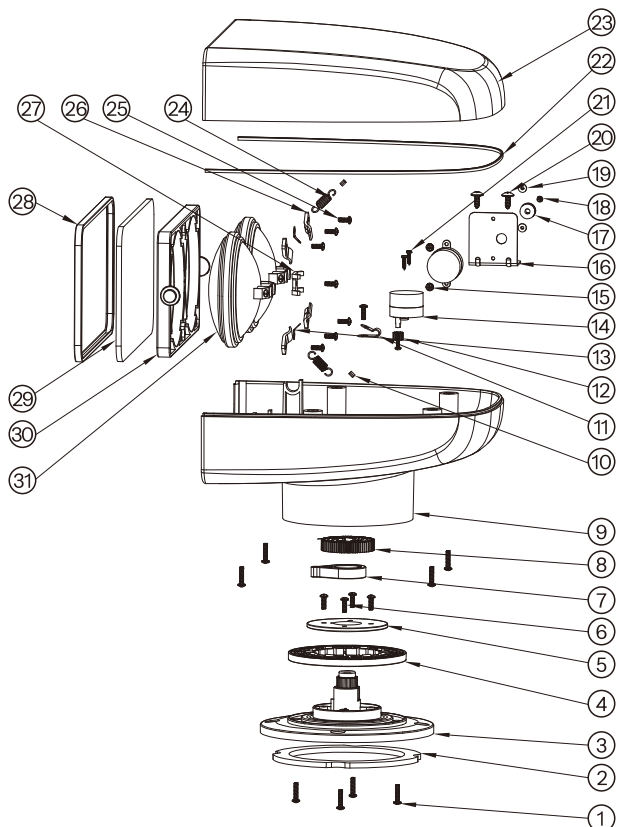
If an additional control station is desired, use the control kit. Mount the secondary control in the same manner as the main control. Mount the station selector panel near the main control (flybridge or lower).

1. Cut a 1.97" x 1.38" (50 mm x 35 mm) opening for the station selector panel within a 1.64 ft (50 cm) radius from the control.
2. Route the secondary control cable from the station selector panel to the secondary control location.
3. Insert the station selector panel through the mounting hole and attach connectors to the mating connectors from the control and searchlight. The connector marked "fly bridge" to go to flybridge control and the connector marked "lower" to lower control. The connector to the nearest control can be plugged directly into the control. See the diagram.
4. Use bedding compound or sealant to waterproof the station selector panel mounting.
5. Secure the panel with the self-tapping screws provided.

BULB REPLACEMENT

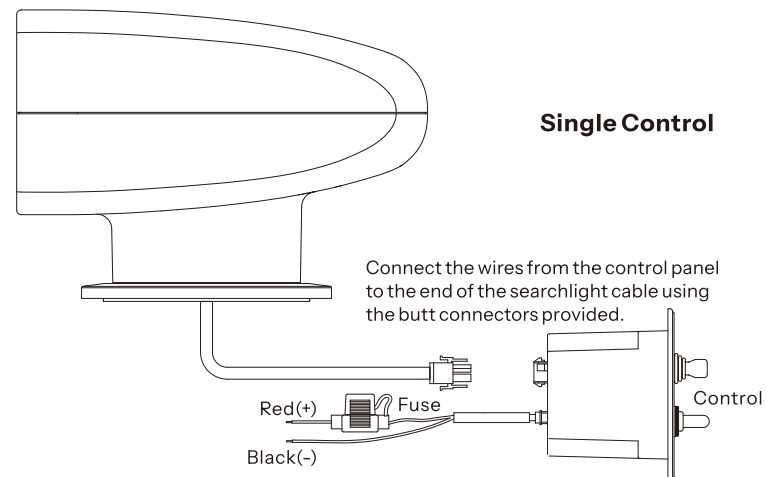
1. Remove the four (4) screws securing the upper housing, then open the upper housing.
2. Remove the four (4) screws and the retaining bezel. Pull the bulb assembly forward and disconnect the spade connectors from the back of the bulb. Reconnect the spade terminals to the new bulb. Install the bulb and secure it with the bezel and the four (4) screws.
3. Reattach the upper housing.

PARTS LIST

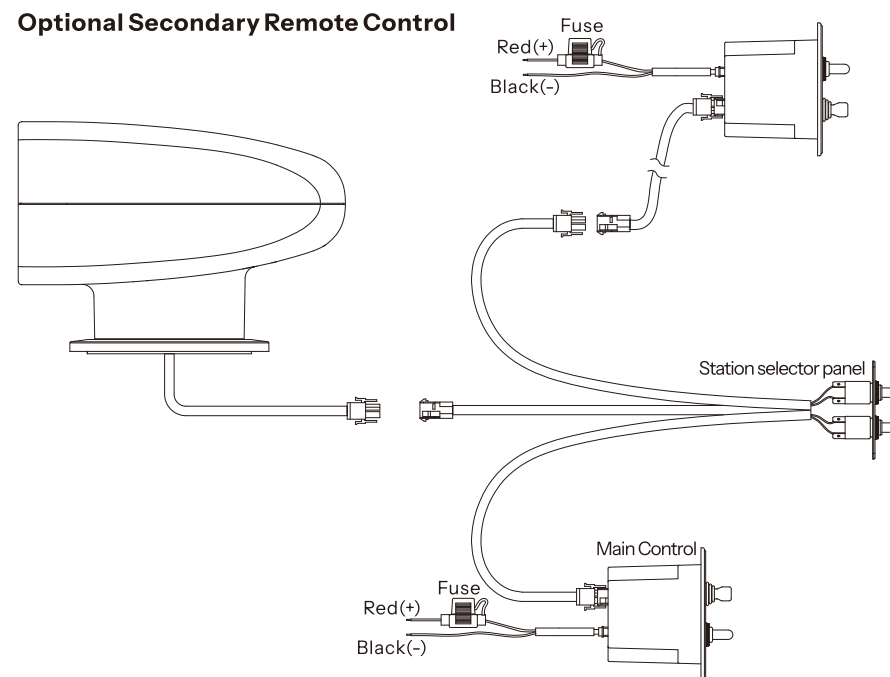


NO.	PART NAME	QTY	NO.	PART NAME	QTY
1	Swing Bracket Screw	8	17	Copper Guide Wheel	1
2	EVA Pad	1	18	Cross-Recessed Pan Head Machine Screw	2
3	Lamp Base	1	19	Stainless Steel Lock Nut	2
4	Rotating Ring	1	20	Cross Head Large Flat Head Self-tapping Screw	2
5	Fixing Ring	1	21	Round Head Self-Tapping Screw	2
6	Cross-Recessed Pan Head Self-Tapping Screw with Slotted End	5	22	Sealing Strip	1
7	Limiter	1	23	Upper Housing	1
8	Lamp Gear	1	24	Extension Spring	2
9	Lower Housing	1	25	Cross-Recessed Pan Head Self-Tapping Screw with Slotted End	7
10	Aluminum Sleeve for Steel Wire Rope	2	26	Fixed Pressure Strip	4
11	Wire Clip	1	27	Limit Pressure Strip	1
12	Motor Gear	1	28	Glass Sealing Strip	1
13	Hook Terminal	2	29	Glass	1
14	Motor	2	30	Lampshade	1
15	Cross-recessed Locking Screw	2	31	Bulb 12/24 Volt	2
16	Mounting Plate	1			

WIRING DIAGRAM

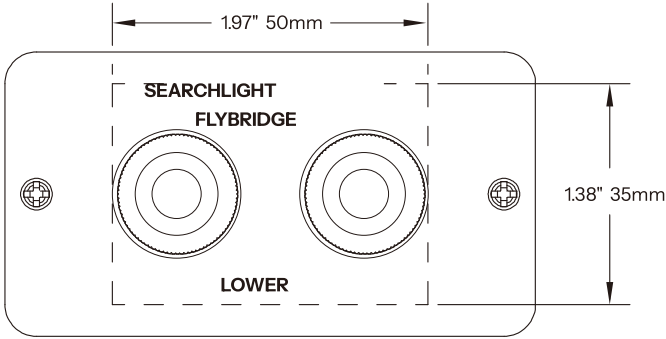


Note: Connect the red and black leads (16 gauge wire) from the control to the positive and negative leads from the power source. The power leads should be a minimum of 16 gauge.

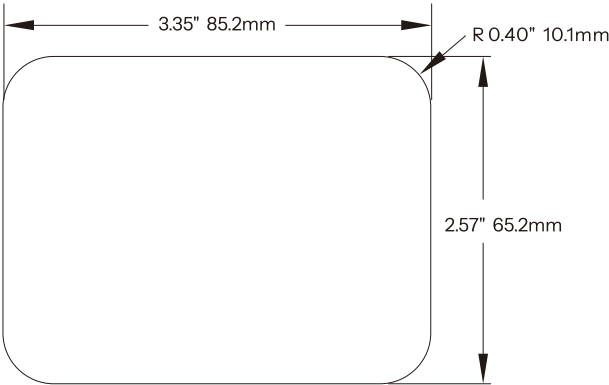


Note: Connect the red and black leads (16 gauge wire) from the control to the positive and negative leads from the power source. The power leads should be a minimum of 16 gauge.

Station Selector Control Panel Dimensions

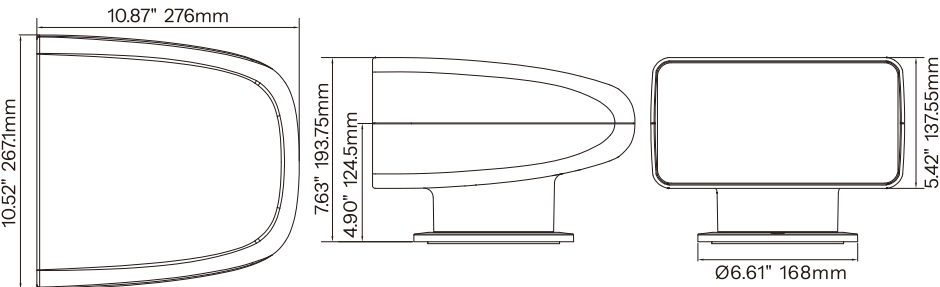


Remote Control Mounting Dimensions

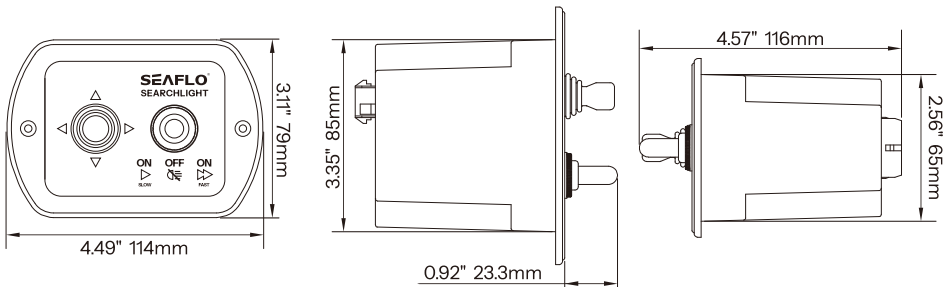


DIMENSIONS

Searchlight



Remote Control



TROUBLESHOOTING

All lights are thoroughly inspected before shipping and are warranted to operate within specifications. If the light does not operate correctly, check the fuse and wire harness connections before proceeding.

Light moves - bulb does not operate	<ol style="list-style-type: none">1. Check bulb.2. Check if fuse is blown.
Dim light	<ol style="list-style-type: none">1. Check voltage at power source.2. Increase wire size from source to control.3. Check for proper ground circuit.