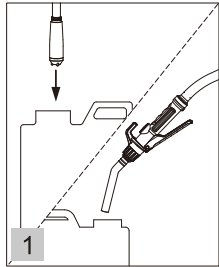
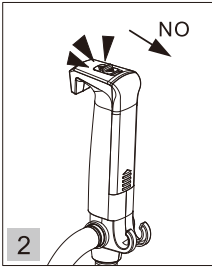


## DIRECTION FOR USE

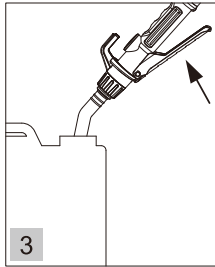
### 2.How to Refuel



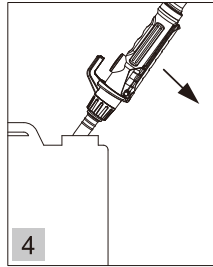
1  
Insert the suction pipe into the supply tank. Place the nozzle into the receiving container to transfer liquid.



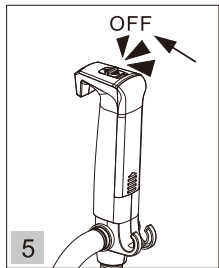
2  
Turn switch ON.



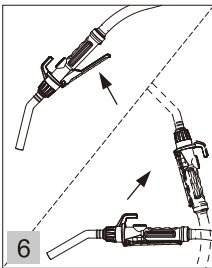
3  
Pull the nozzle lever and start supplying the liquid.



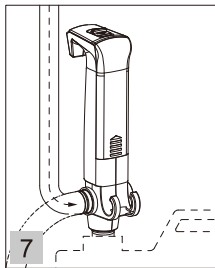
4  
Release the lever when the liquid supply is completed.



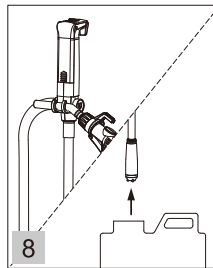
5  
Turn switch OFF.



6  
Pulling the lever of the nozzle, lift it up.



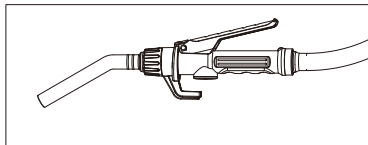
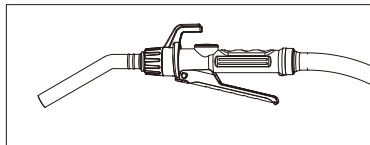
7  
Let the left-over liquid in the hose flow back into the tank.



8  
Insert the nozzle in the nozzle holder for temporarily storage and take out for long time storage.

### NOZZLE LEVER

Nozzle lever designed to operate in two different ways according to the application.

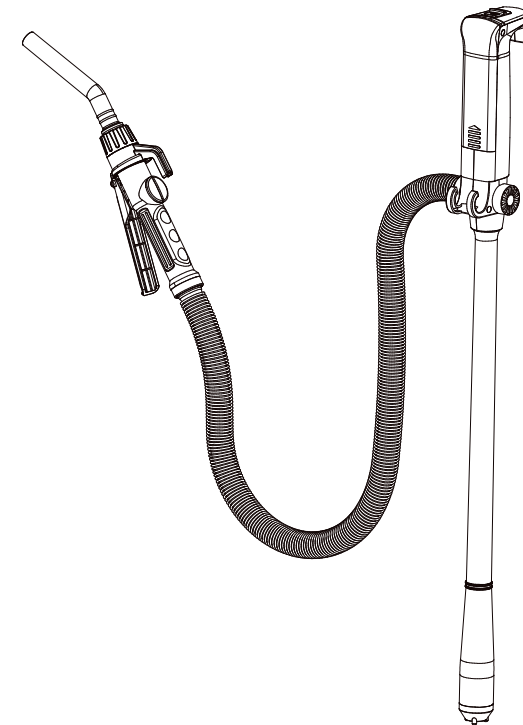


**SEAFLO®**

## FUEL TRANSFER PUMP MANUAL

### INSTRUCTIONS AND PRECAUTION

Please read all instructions and precautions before use



Model No.	SFFTP5-025-01	SFFTP5-032-01	SFFTP1-032-01
Open Flow Rate	2.5 GPM	3.2 GPM	3.2 GPM
Operating Voltage	DC3V	DC3.7V	DC12V
Battery Type	2 pcs DD type	Lithium	NA, Cable
Max Head	1.5m from outport	3.0m from outport	3.0m from outport
Suction Pipe Length	Approx. 506mm		
Discharge Hose Length	Approx. 1050mm		
Operating Temp.	+5°C~40°C (41°F~104°F)		
Applicable Liquids	Gasoline, Diesel, Kerosene, Light oil, Water		

## PRECAUTIONS FOR USE

These instructions are to ensure the product is used correctly, safely, and to prevent any possible risk or damage to the user and/or others people. SEAFLO shall not take any responsibility for any failure of product, malfunction and damages caused by improper use by the user or third parties.

### **! DANGER**

If the directions of this sign are not followed, fatal accidents can happen and the user may die or get seriously injured.

Do not use for concentrated acids.

Only use on applicable liquids written on the specifications.

Do not use this pump for transferring the following liquids; Aceton, Benzen, Cresol, Ethyl, Phenol, Methyl ethyl, Concentrated caustic soda liquid, Nitric acid, Hydrochloric acid, Sulfuric acid, thinner or solvents, Etc.

Don't close to flame when refuel.

### **! WARNING**

If the directions of this sign are not followed, accidents can happen or the user can get injured.

Do not refuel directly while the vehicle or equipment is turned on.

Do not leave the pump unattended.

Make sure to use the pump on a flat ground.

Do not allow children to operate the product without adult supervision.

### **! CAUTION**

the directions of this sign are not followed, the product can get damaged or the user can get injured.

After using the pump, do not keep it on its side or upside down.

Make sure to remove any left-over liquid in the discharge hose after each use.

Do not alter or disassemble the pump.

Do not run the pump dry or let the pump idle without transferring.

Make sure to turn off the power after using the pump. Take out the battery if long time no use.

Do not shock the pump.

Do not use deteriorated or contaminated liquids and fuels.

Do not place the pump in a wet area.

Do not use this pump for hot liquids above 40°C(104°F).

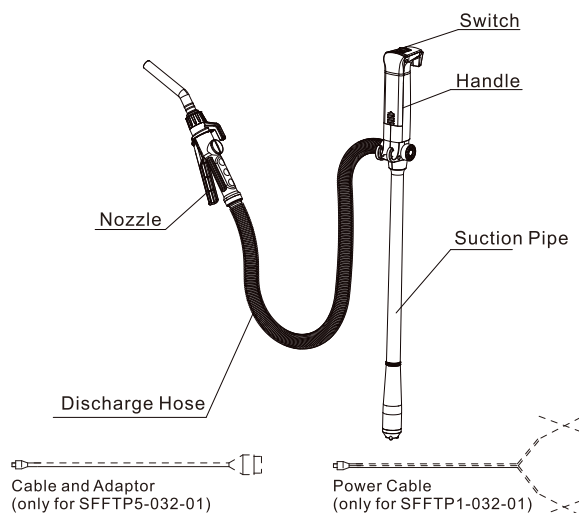
Operate only in open, cool and well ventilated areas.

Stop and reset after 5 minutes of continuous use to prevent overheating.

Use only pure liquid without any debris.

Don't use it for drinking water.

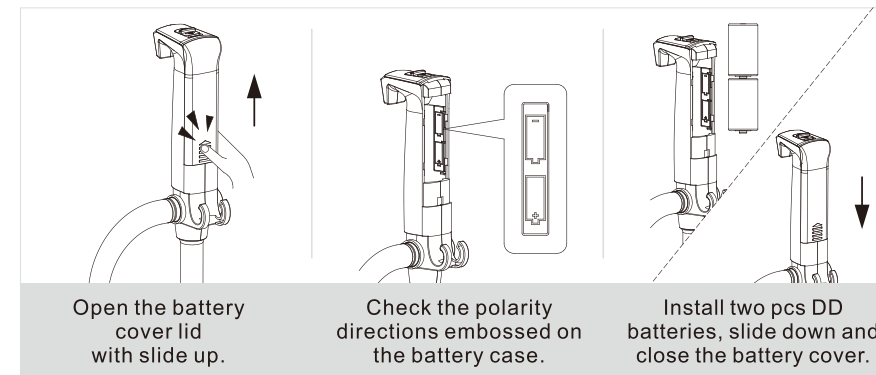
## NAME OF COMPONENTS



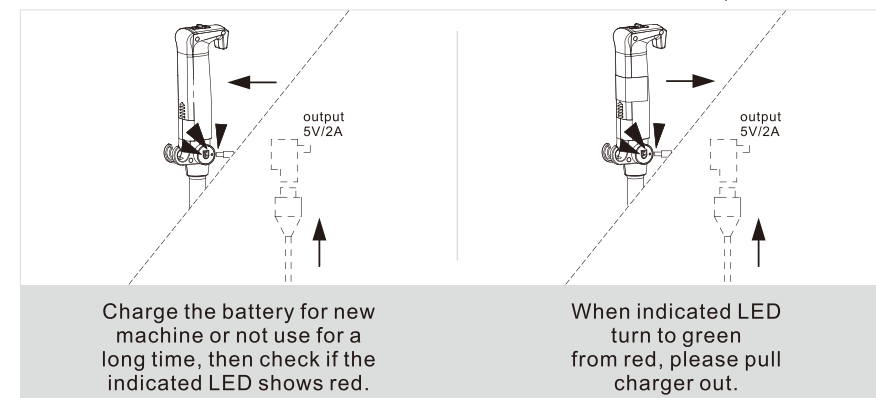
## DIRECTION FOR USE

### 1. Power Supply

SFFTP5-025-01(DD Battery)



SFFTP5-032-01(Lithium Battery)



SFFTP1-032-01(Cable)

