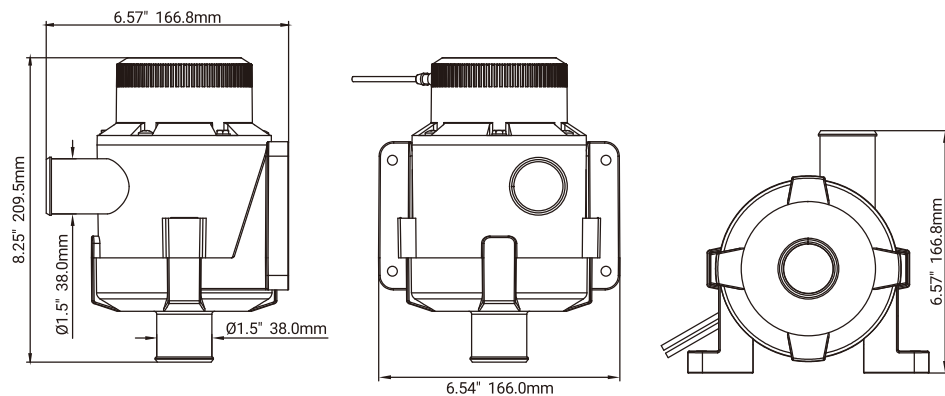


## INSTALLATION DIAGRAM



## INSTALLATION NOTES

All mounting holes must be sealed with a marine grade sealant to prevent water intrusion.

### ABYC

Setting Standards for Safer Boating  
Install to ABYC standards

#### ⚠ WARNING

This pump is designed for use with fresh water and salt water ONLY.

Use with any other hazardous, caustic, or corrosive material could result in damage to the pump and the surrounding environment, possible exposure to hazardous substances and injury.

#### ⚠ CAUTION

Always install proper fuse size to prevent damage to product should a short occur. Failure to install proper fuse could increase risk of pump malfunction potentially resulting in personal injury and/or fire hazard.

#### ⚠ CAUTION

Disconnect power from the system before working on the unit to avoid personal injury, damage to the surrounding environment and/or damage to the unit.

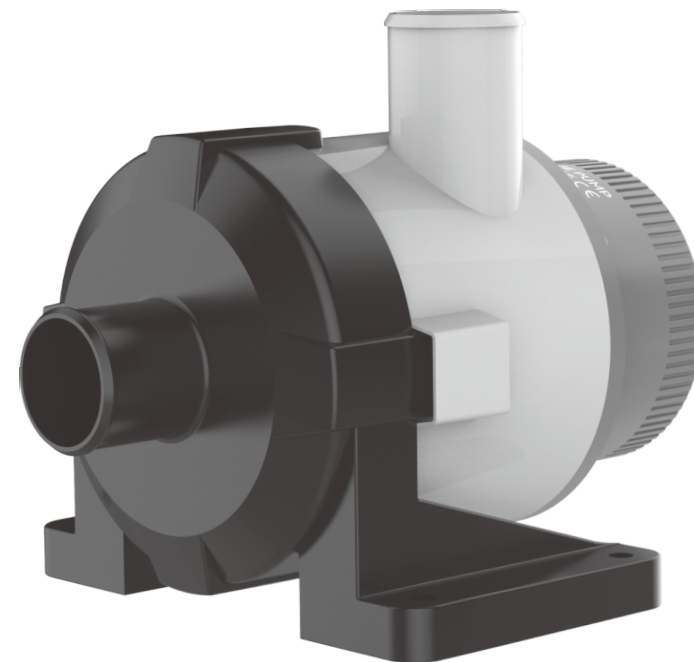
#### ⚠ CAUTION

Keep all wire connections above the highest water level. Wire connections should be sealed with a marine grade sealant to prevent wire corrosion.

# SEAFLO<sup>®</sup>

## General Purpose Pump

### Instruction Manual



The SEAFLO General Purpose Pump is designed for use as a washdown pump and/or to circulate water to your livewell tanks. It delivers lots of water but at low pressure. Widely used in heavy-duty construction for commercial or pleasure boats. Designed to exacting quality standards, featuring a unique moisture seal for easy cleaning and a compact, efficient, long-life motor. The SEAFLO General Purpose Pump must be mounted below the waterline. It does not deliver high pressure, nor is it self priming.

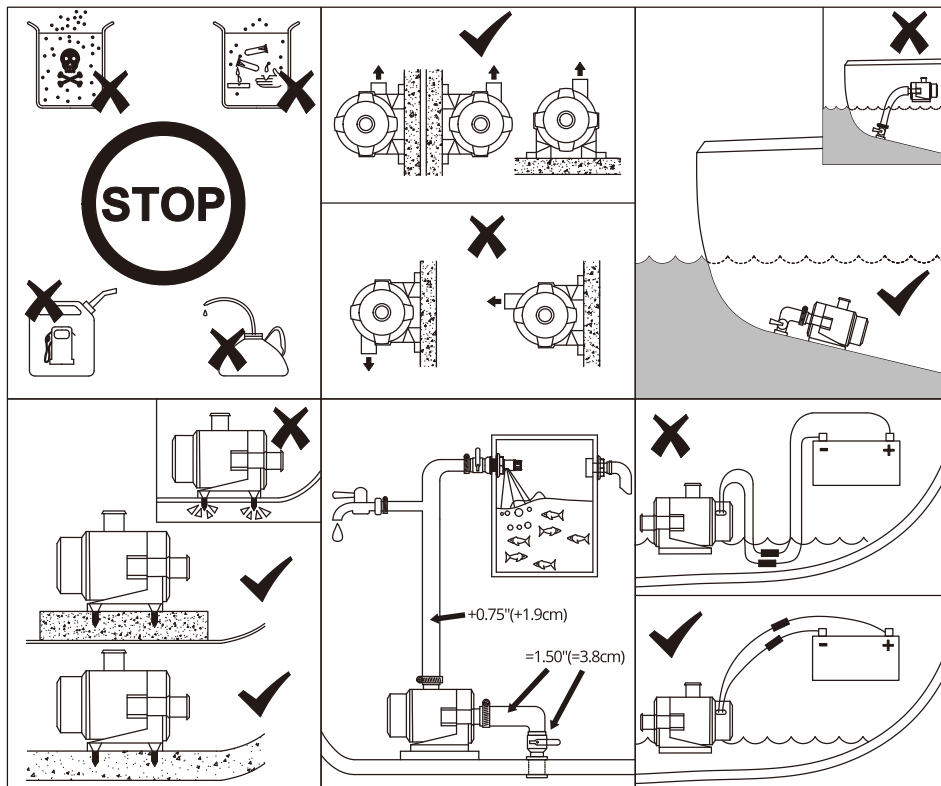
## STANDARD CONFIGURATIONS

Model	Flow rate (GPH/LPH)	Volts	Amp Draw	Fuse Size	Lift	Ports
SFBP1-G3800-01A	3800/14383	12V	15.5A	25A	5.3m	38mm / 1-1/2"
SFBP2-G3800-01A	3800/14383	24V	6.9A	15A	5.3m	38mm / 1-1/2"

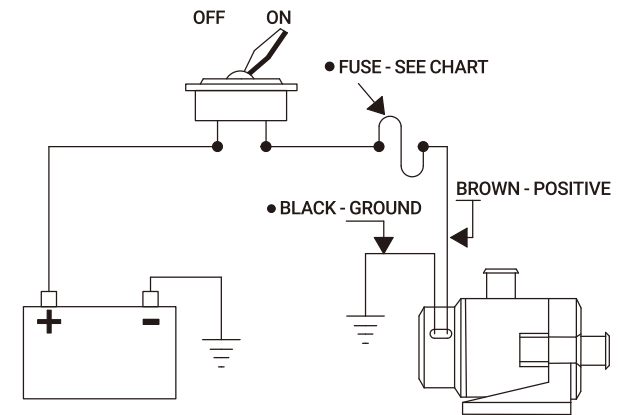
## FEATURES

- Easy to install and remove for cleaning
- Compact, efficient and long-life motor
- Exclusive moisture seal, Rust and corrosion proof
- 110°F (43°C) maximum temperature
- Silent and vibration-free operation
- Shock-absorbing reinforced base
- Entirely Submersible
- Anti-Airlock protection
- Ignition protection

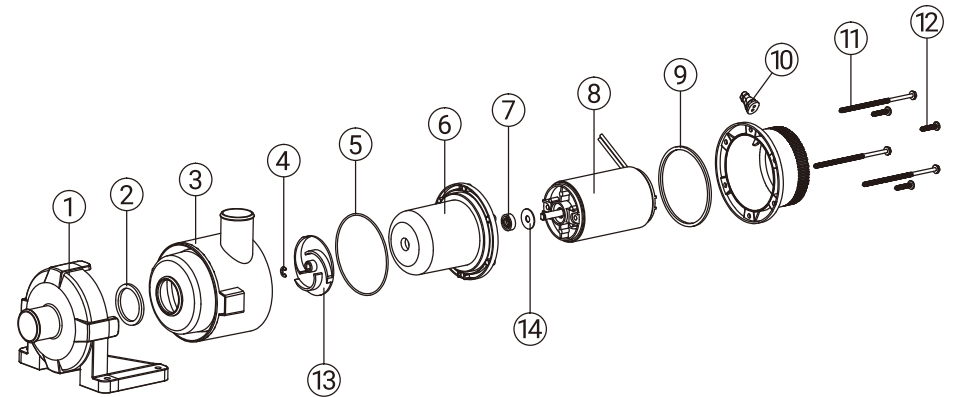
## INSTALLATION PRECAUTIONS DIAGRAM



## WIRING DIAGRAM



## REPAIR KITS



Key	Description	Key	Description
1	Base	8	Motor
2	Washer	9	Flat washer
3	Shell	10	Sealing of Wire
4	Snap ring	11	Self-tapping screws 5*25MM
5	O-ring	12	Self-tapping screws 5*110MM
6	Liner	13	Impeller
7	Oil seal	14	Small gasket