

SEAFLO®

Float Switch

Instruction Manual

FEATURES

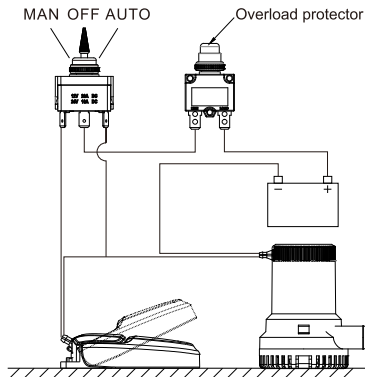
- Mercury free
- Compact design, easy installation
- When water level is lower than 20~25 mm (0.79"~0.98"), switch will turn off automatically.
- When water level higher than 45~50 mm (1.77"~1.97"), switch will turn on automatically.

ELECTRICAL INFORMATION

Model	Max Amps	Wire Gauge Size	Wire Lead	N.W. / G.W	Dimension
SFBS-12-04A	12 A	16 AWG	1 M	105 G	L110 mm*W77 mm*H33 mm
SFBS-12-04B	12 A	16 AWG	1 M	175 G	L144 mm*W92 mm*H81 mm
SFBS-25-03A	25 A	14 AWG	1 M	120 G	L133 mm*W76 mm*H33 mm
SFBS-25-03B	25 A	14 AWG	1 M	190 G	L144 mm*W92 mm*H81 mm

★ "A" refers to without filter housing; "B" refers to with filter housing.

INSTALLATION



Instruction:

- When the switch panel is in manual option, the pump is turn on by ma-nual. The switch panel will turn off when you release your hand from switch panel. If the switch panel is in automatic option, when water level is higher than 45~50 mm (1.77"~1.97"), the pump will be turn on automatically; while water level is down to 20~25 mm (0.79"~0.98"), the pump will be turn off automatically.
- Install switch together with bilge pump in the bottom of bilge. Keep away from high temperature, engine etc.
- To have a better performance, the switch should be installed horizontal, the max mounting angle should be 30°
- Use tinning wire to prevent from erosion.

TIPS FOR WIRE CONNECTION

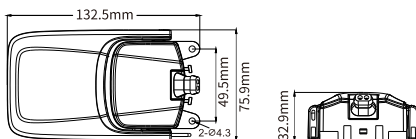
- Twisting the wire together to reduce RFI (radio interference)
- Please use the recommended fuse as the label of pump.
- The fuse must be installed between battery and switch panel.
- Keep the wire connection above from water level, and seal a wire with waterproof marine sealant to avoid corrosion.

CAUTION

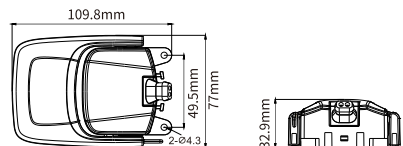
- Connect the brown wire of float switch to the positive of pump (brown wire) and then connect the wire to manual option of switch panel.
- Connect the other brown wire of float switch with automatic option of switch panel.
- Connect the negative of pump (black wire) with the negative of battery.

DIMENSIONS

Size of float switch

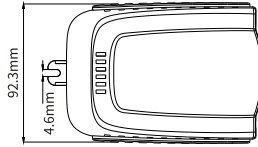
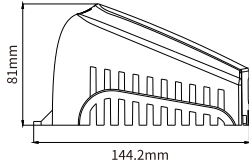


25 A



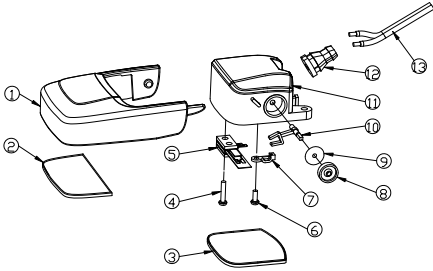
12 A

Size of cover housing

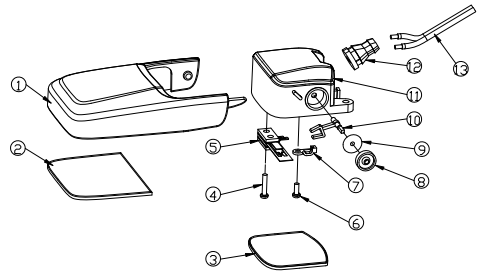


cover housing for both 12A and 25A

REPAIR KITS



12 A



25 A

Key	Description		Quantity
	12A	25A	
1	12A floater	25A floater	1
2	Float plate		1
3	Main casing plate		1
4	screw-1		1
5	Shrapnel switch	Shrapnel switch	1
6	screw-2		1
7	fixed part of spindle		1
8	Oil seal		1
9	Rubber gasket		1
10	12A axis of rotation	25A axis of rotation	1
11	Main casing		1
12	Seal for wire		1
13	16 AWG Wire	14 AWG Wire	2