

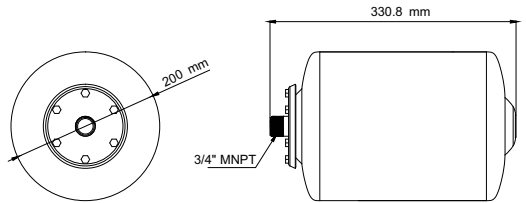
SEAFLO®

8L ACCUMULATOR TANK INSTRUCTIONS

SFAT-087-021-01

PRODUCT PARAMETER

Volume: 8L (2 GAL)
Water Maximum Pressure: 87 PSI (6 BAR)
Inlet / outlet size: 3/4 " MNPT
Net Weight: 2KG(4.4 LB)
Certification: CE



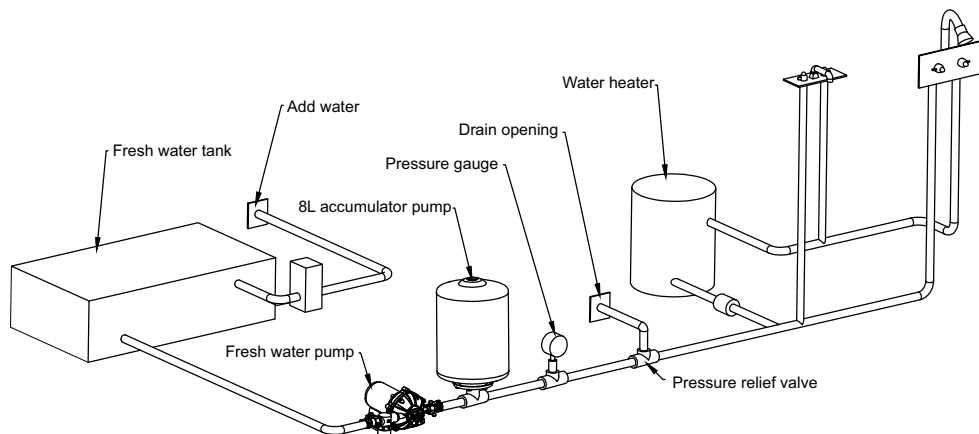
PRODUCT FEATURES

- EPDM rubber interior
- Making flow more smooth
- No noise water system
- Extend pump's service life
- Applicable to new or existing systems
- Compact design
- 3/4 " MNPT

ACCUMULATOR TANK FUNCTION

Accumulator tank in a constant pressure water supply system is to maintain the pressure, which can prevent the system from high frequency of pressure fluctuation with reduce the frequent start of the pump. Accumulator tank can also be used to absorb the water hammer shock caused by on and off of valves & switch of pump. Accumulator tank can extend pump's life and save power, because when there is leakage in the water system, the accumulator tank will supply the leaking water, which can make the pump start less. Accumulator tank in the air conditioning, floor heating, solar, boilers and other closed water circulation system can make the pressure stable, and avoid frequent opening of the safety valve and automatic replenishment valve and so on.

INSTALLATION GUIDE



INSTALLATION INSTRUCTIONS

1. In the constant pressure water supply system, accumulator tank is installed in the outlet of water pump. A stop valve should be installed between accumulator tank and pipe connection for later inspection and maintenance.
2. A relief valve should be installed near the accumulator tank. The pressure setting of relief valve pressure should be 87PSI (the maximum working pressure of accumulator tank). When the pressure of water system is over 87PSI, the relief valve will turn on automatically to release the pressure to avoid damage to the pressure tank and other parts of the system when the system pressure is abnormal.
3. The pressure of the accumulator tank is pre-set at 30 (± 5)PSI before shipping from factory. If the user thinks the pressure is not suitable for the water system, DO USE pressure gauge to test the pressure during charge and deflate of the pressure, or contact with us. Do NOT charge and deflate of the pressure with no pressure gauge.

WARNING

PLEASE READ THE MANUAL CAREFULLY BEFORE INSTALLATION AND USE. BECAUSE PETROLEUM PRODUCTS IS UNSTABLE AND DANGER, DO NOT USE THE TANK FOR GASOLINE, PETROLEUM PRODUCTS AND ANY LIQUID WITH IGNITION POINT BELOW 37 °C (98 °F).

THE INTERNAL PRESSURE OF THE TANK MUST BE LESS THAN 87PSI, OR THE PRODUCT WILL BE DAMAGED. IN SEVERE, IT EVEN CAUSE INJURY.

THE TEMPERATURE OF LIQUID THAT THE TANK BEAR SHOULD BE 0~60°C (32~140°F), OR IT WILL SHORTEN THE PRODUCT'S SERVICE LIFE.

WHEN THE TEMPERATURE IS BELOW 0°C (32°F), PLEASE DRAIN THE TANK, OR THE PRODUCT MAYBE BE DAMAGED DUE TO FREEZE.